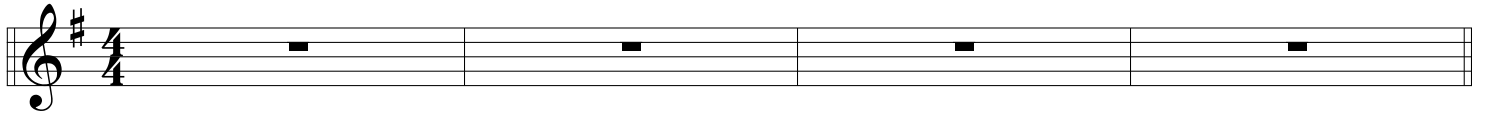


瑠璃の星 (in G)

Gadd9 C/G D/G C/G Gadd9 C/G D/G C/G



A D.S~Solo~ G D/B C D7 B7/D# Em7 G/D A/C# Am7/D



Cm7 G/D D/E A Am7/D Gadd9 C/G D/G C/G



Solo ~

G D/B C D7 B7/D# Em7 G/D A/C# Am7/D



Cm7 G/D D/E A Am7/D Gadd9 C/G D/G C/G



B Cm7 Dm11 Eb F7 Bb Gm9



Cm7 Dm11 Eb(add9) F(add9) Gsus4 G To Coda

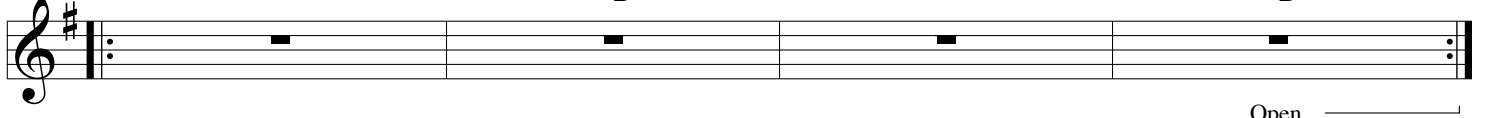


Bump C G(add9)/B Am7 D7 Gadd9 C/G D/G C/G



D.S

Gadd9 Bm7 C Am7/D Gadd9 Bm7 C Am7/D



Open

C G(add9)/B Am7 D7 G6/9



rit. -----