

♩=70

# Fly me to the Moon

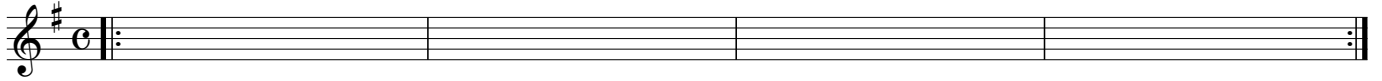
Melody

**Intro.**

Em9

Am7  
D

Em9



※ ストレート to 2.

**A** Em9 Am7/D Em9



FΔ7

Dm6 DbΔ7 FΔ7/C B7(b9)

Em7



1.

Am7

Gb7(b5)  
Ab

GΔ7

Em9



Cm9

G  
F

E  
F#

F7(#11)



2.

Am7

C  
D

D  
C

AM9  
B

C  
Bb



Am7

Bm7

CΔ7

Last only (●)

To Coda



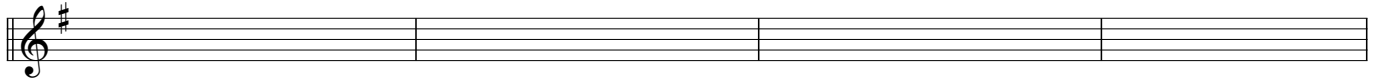
**B**

Solo ~

Em9

Am7  
D

Em9

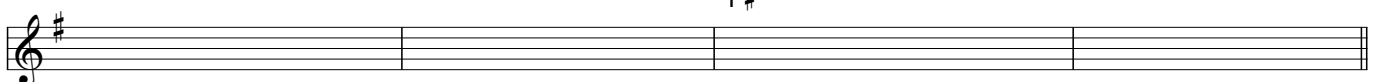


FΔ7

E  
F#

F13

Em9

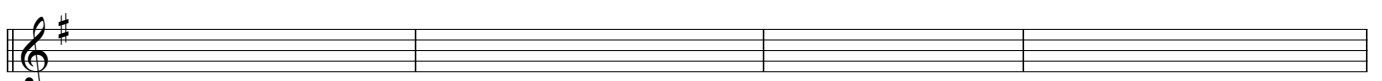


Am7

Ab13

GΔ7

Em9



Cm9

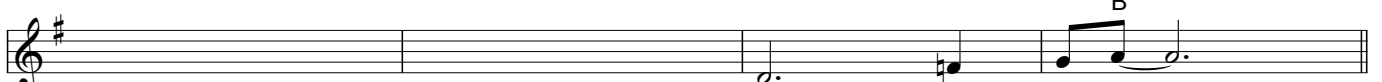
F13

G

Bm

Bb

A  
B



D.S.

⊕

Am7

Bm7

CΔ7

Solo



Em9

rit. -----

